



ZC-D5000 Series

540 TVL DAY/NIGHT DOMES



- Single Model for Surface and Flush Mount
- True Day/Night and Digital Day/Night Versions
- 540 TVL Super High Resolution
- 7 **Computar**® CS Mount Varifocal Lens Options
- Optional Twisted-Pair Cat 5 Video Transmission
- 12VDC or 24VAC Operation, Auto-Sensing
- Includes Adapter Plate for 4S Gang Box
- UL Listed



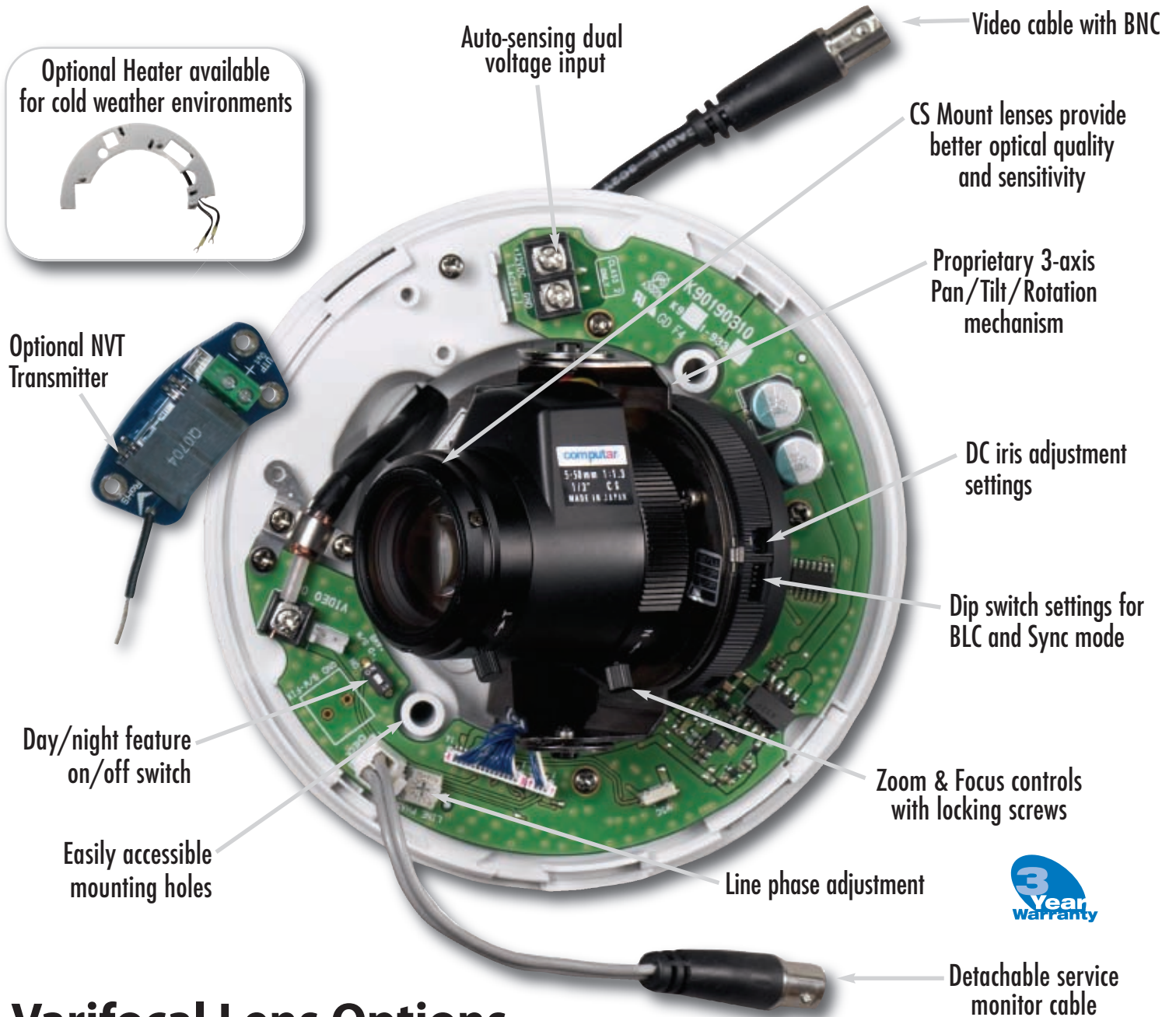
Integrated CS Mount
Varifocal Lenses



CBC (AMERICA) Corp.

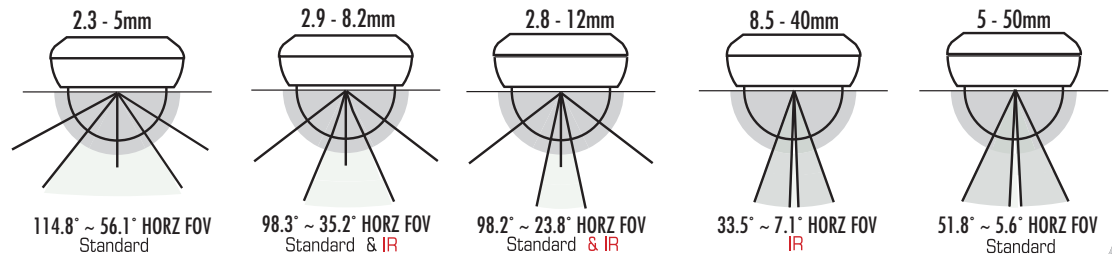
NY: 1-800-422-6707
CA: 1-800-888-0131
www.computarganz.com

DOME FEATURES



Varifocal Lens Options

For optimum flexibility the ZC-D5000 series offers 7 **computer**® CS-Mount Aspherical Varifocal Lens options.



MOUNTING OPTIONS

Indoor



SURFACE MOUNT

Standard
(also available in black)



FLUSH MOUNT

Standard



PENDANT MOUNT

Model No.
ZC5-PM1



WALL MOUNT

Model No.
ZC5-WM1

Outdoor/Impact-Resistant



ZC-OH5

ZC-D5000 Universal
Outdoor Housing



BOTTOM VIEW

3/4" Conduit hole detail



PENDANT MOUNT

Model No.
ZC5-PM2



WALL MOUNT

Model No.
ZC5-WM2

Accessories

The ZC-D5000 Series 540 TVL Super High Resolution domes are available in True (mechanical) D/N and Digital D/N versions. The indoor version features a single model for surface and flush mounting. The outdoor housing features a built-in 3/4" conduit hole for more convenient installation and also offers ceiling and wall mount options. All models are available with pre-installed NVT transmitter for video transmission over CAT 5 cable. Manual Iris version also available.

ZC-OH5	Outdoor Housing for 5000 Series Domes
ZC5-PM1	Pendant Mount Adapter; Mounts to Dome Base & uses 1" NPT Pipe
ZC5-WM1	Wall Mount Includes ZC5-PM1 Pendant Mount & Wall Bracket
ZCA-DCS50	Tinted Dome Cover Conceals Lens for Discrete Applications
ZC5-PM2	Pendant Mount Adapter Mounts To ZC-OH5 Housing Base & uses 1" NPT Pipe
ZC5-WM2	Outdoor Wall Mount Includes ZC5-PM2 Pendant Mount & Wall Bracket
ZC5-HTR	Optional Heater for 5000 Series Domes (24VAC, 15W)
ZC-D5000MM	Dummy Dome Housing

SPECIFICATIONS

ZC-D5000 SERIES DOME MODELS

	INDOOR		OUTDOOR	
	DIGITAL DAY/NIGHT	TRUE DAY/NIGHT	DIGITAL DAY/NIGHT	TRUE DAY/NIGHT
2.3 - 5mm Varifocal Lens	ZC-D5025NHA	N/A	ZCOH5-D25NHA	N/A
2.9 - 8.2mm Varifocal Lens	ZC-D5029NHA	ZC-DN5029NHA	ZCOH5-D29NHA	ZCOH5-DN29NHA
2.8 - 12mm Varifocal Lens	ZC-D5212NHA	ZC-DN5212NHA	ZCOH5-D21NHA	ZCOH5-DN21NHA
8.5 - 40mm Varifocal Lens	N/A	ZC-DN5840NHA	N/A	ZCOH5-DN84NHA
5 - 50mm Varifocal Lens	ZC-D5550NHA	N/A	ZCOH5-D55NHA	N/A

* Add suffix "T" for NVT module.

* Pre-installed NVT transmitter provides video transmission over CAT 5/Twisted pair cable. A separate receiver is required.

CAMERA SPECIFICATIONS

TYPE	DIGITAL DAY/NIGHT				TRUE DAY/NIGHT			
	MODELS	ZC-D5025NHA	ZC-D5029NHA	ZC-D5212NHA	ZC-D5550NHA	ZC-DN5029NHA	ZC-DN5212NHA	ZC-DN5840NHA
RESOLUTION (HORIZONTAL)	540 TVL							
TV SYSTEM	NTSC							
MIN. ILLUMINANCE 50 IRE	1.28 lux (D/DN:OFF)/0.85 lux (D/DN:ON)	1.25 lux (D/DN:OFF)/0.83 lux (D/DN:ON)	1.41 lux (D/DN:OFF)/0.94 lux (D/DN:ON)		0.07 lux (Night mode, B/W)		0.11 lux (Night mode, B/W)	
	30 IRE	0.66 lux (D/DN:OFF)/0.43 lux (D/DN:ON)	0.63 lux (D/DN:OFF)/0.42 lux (D/DN:ON)	0.73 lux (D/DN:OFF)/0.47 lux (D/DN:ON)		0.03 lux (Night mode, B/W)		0.05 lux (Night mode, B/W)
WITH IR ILLUMINANCE	—	—	—	—	0.00 lux (Night mode, B/W)		0.00 lux (Night mode, B/W)	
S/N RATIO	More than 50dB (at minimum AGC gain)							
WHITE BALANCE	ATW				ATW/AWB			
GAMMA CHARACTERISTIC	0.45							
SCANNING SYSTEM	2:1 interlace							
IMAGE SENSOR	1/3" interline transfer CCD							
EFFECTIVE ELEMENTS (H) X (V)	768 (H) x 494 (V)							
VIDEO OUTPUT	1.0V (p-p)/75Ω							
POWER SUPPLY	AC24V ±10% 50Hz/60Hz ± 1Hz, DC 12V ± 10%							
POWER CONSUMPTION - DC12V	3.0W							
POWER CONSUMPTION - AC24V	4.2W, 250mA							
EXTERNAL DIMENSIONS	5.6" Ø x 4.3" H							
WEIGHT	470g/16.6 oz	470g/16.6 oz	490g/17.3 oz	560g/19.7 oz	470g/16.6 oz	490g/17.3 oz	550g/19.4 oz	
SYNC. SYSTEM	Internal Synchronization (INT.)/Line Lock (L.L.): For 60Hz regions only							
ELECTRONIC SHUTTER	1/60 sec. fixed (Flickerness: OFF), 1/100 sec. fixed (Flickerness: ON)							
SCANNING FREQUENCY	15.734kHz (H)/59.94Hz (V)							
TEMPERATURE RANGE	Operational limits: 14° F to 122° F /Storage limits 4° F to 140° F							
HUMIDITY RANGE (Non Condensing)	Operational limit: Maximum 85% RH/Storage limit: Maximum 95% RH							
ADJUSTMENTS	DC iris adjustment, AC line lock phase adjustment							
ACCESSORIES	Cable for service monitor, Adapter ring, Self-tapping screws (M4x20: 2pcs.) Template, Instruction manual							

LENS SPECIFICATIONS

MODELS	ZC-D5025NHA	ZC-D5029NHA	ZC-D5212NHA	ZC-D5550NHA	ZC-DN5029NHA	ZC-DN5212NHA	ZC-DN5840NHA
LENS FOCAL LENGTH	2.3mm-5mm	2.9mm-8.2mm	2.8mm-12mm	5mm-50mm	2.9mm-8.2mm	2.8mm-12mm	8.5mm-40mm
MAX. APERTURE RATIO	1:1.2	1:1.0	1:1.3		1:1.0	1:1.3	
IRIS	F1.2 - F360C (DC auto iris)	F1.0 - F360C (DC auto iris)	F1.3 - F360C (DC auto iris)		F1.0 - F360C (DC auto iris)	F1.3 - F360C (DC auto iris)	
ANGLE OF VIEW							
(H)	114.8° - 56.1°	98.3° - 35.2°	98.2° - 23.8°	51.8° - 5.6°	95° - 35.6°	102.2° - 23.7°	33.5° - 7.1°
(V)	86.0° - 42.1°	70.7° - 26.3°	73.6° - 17.8°	39.2° - 4.3°	69° - 26.7°	74.2° - 17.8°	24.4° - 5.3°

OPTIONAL OUTDOOR HOUSING SPECIFICATIONS (MODEL ZC-OH5)

HOUSING MATERIAL	Cast Aluminum with powder coat painted finish, all stainless steel hardware
DOME MATERIAL	Impact-resistant clear polycarbonate dome with black interior liner (tinted option available)
HOUSING COLOR	Off white powder coat paint (other color options available on a special order basis)
TEMPERATURE RANGE W/O HEATER	-20° F to 122° F without heater (using ZC-D5000 Series domes, based on proper installation & maintenance procedures)
TEMPERATURE RANGE WITH HEATER	-40° F to 122° F with optional heater (using ZC-D5000 Series domes, based on proper installation & maintenance procedures)
WEIGHT	2lb. 5oz.
DIMENSIONS	6.7" Ø, 5" overall height

All specifications are subject to change without notice



CBC (AMERICA) Corp.



NEW YORK: 55 MALL DRIVE COMMACK, NY 11725 • TEL: 1 (800) 422-6707 • (631) 864-9700 • FAX: (631) 543-5426
 CALIFORNIA: 20521 EARL STREET TORRANCE, CA 90503 • TEL: 1 (800) 888-0131 • (310) 793-1500 • FAX: (310) 793-1506
 www.computarganz.com © 2008 CBC (AMERICA) Corp. All Rights Reserved. 07/08 r2