



Speciality Cameras

Weatherproof Thermal Imaging Cameras

ZT-W Series

The high performance ZT-W thermal camera is IP66 rated for all weather conditions. This durable unit is ideal for high-end security applications including perimeter surveillance, search & rescue, port & marine security, border patrol, electrical inspection and energy conservation.

Features:

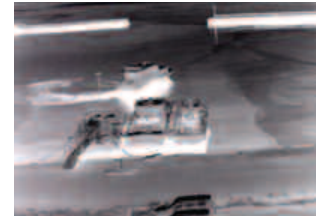
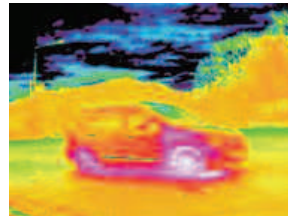
- High Resolution, High Sensitivity (40mK NETD)
- Extended Microbolometer Thermal Imaging Technology
- 8.6mm, 13mm, 18.8mm, 20mm or 35mm Lens Options
- Built-in TEC (Thermo Electric Cooler)
- 5 Step AGC Function
- IP66 Rated for all Weather Conditions

Scan Me!



ZT-W Series

Weatherproof Thermal Imaging Cameras



Ideal for Perimeter, Transportation and Marine Security Applications

■ Specifications

Model		ZT-W	
Camera/ Lens	Sensor	Type	Uncooled Microbolometer
		Cell Size	25µm
		Pixels	384 x 288
	Resolution	D1 Class with Original Scaling Technology	
	Measuring Wavelength	8 ~ 14µm	
	NETD (Noise Equivalent Temperature Difference)	40mK / F1.0	
	Video Output	NTSC / PAL (Switchable), Digital 8bit (BT.656)	
	Output Frequency	59.94Hz (30FPS)	
Lens Options	8.6mm, 13mm, 18.8mm, 20mm, 35mm		
Function	Calibration	Auto / Manual / Interval (up to 3,600 sec) Mode Selectable	
	Image Flip	Vertical (Flip), Horizontal (Mirror) ON/OFF	
	Inverse Mode	ON/OFF	
	AGC	ON/OFF One-push (5 step)	
	Output Mode	NTSC/PAL Mode Selectable	
	Image Mode	B/W and Three Color Mode	
	Digital Zoom	X 4 (15 Steps)	
	Temperature Range Process	MIN/MAX Temperature Range Selectable	
	Range of Observation Display	-4° F ~ 248° F (Normal Mode) -4° F ~ 1202° F (High Temp Mode)	
	Menu	OSD Menu Available	
Physical	Power Source	12VDC	
	Power Consumption	17W Max	
	Temperature	-31°F ~ 131°F (-35°C ~ 55°C)	
	TEC (Thermo Electric Cooler)	Built-in	
	Dimensions	5.7" W x 4.3" H x 11.2" D (145 W x 110 H x 285mm D)	
	IP Rating	IP66	

All specifications are subject to change without notice.