



## Warning before installation

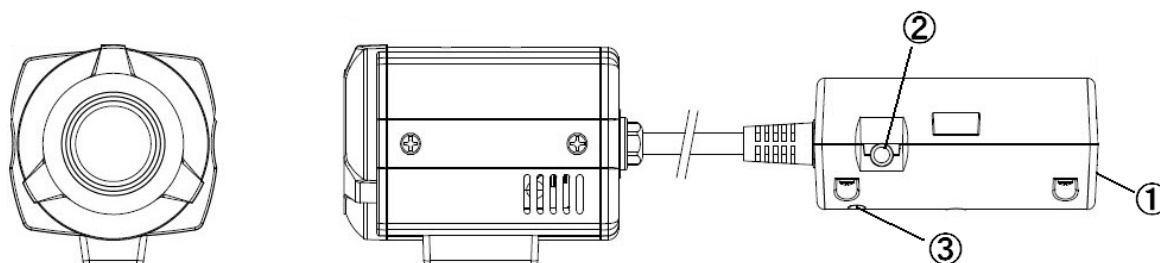
- Power off the Network camera if it is found to be smoking or smells unusual.
- Keep the Network camera away from water. If the Network camera gets wet, power off immediately.
- Do not place the Network camera near heat sources, such as a television or oven.
- Refer to your instruction manual for the operating temperature.
- Keep the Network camera away from direct sunlight.
- Do not place the Network camera in high humidity environments.
- Do not place the Network camera on unsteady surfaces.
- Do not touch the Network camera when there is lightning present.
- Do not disassemble the Network camera.
- Do not drop the Network camera.
- Do not insert any object into the Network camera, such as a screwdriver.

For other safety and regulation information, please refer to “User’s manual”.

## 1. Check Contents

No.	Item	Description
1	Network Camera	ZN-M2AF
2	Software CD	User’s Manual, Utility software
3	Quick User Guide	This document
4	Accessories	Video monitor cable Tripod Screw for tripod mount : 2pcs

## 2. Physical Description



- ① Network (RJ-45 POE required)
- ② Video output for service monitor
- ③ Reset Switch

## 3. Making Connection

Connect Ethernet cable to make a connection to the POE HUB.  
The camera supports POE only.

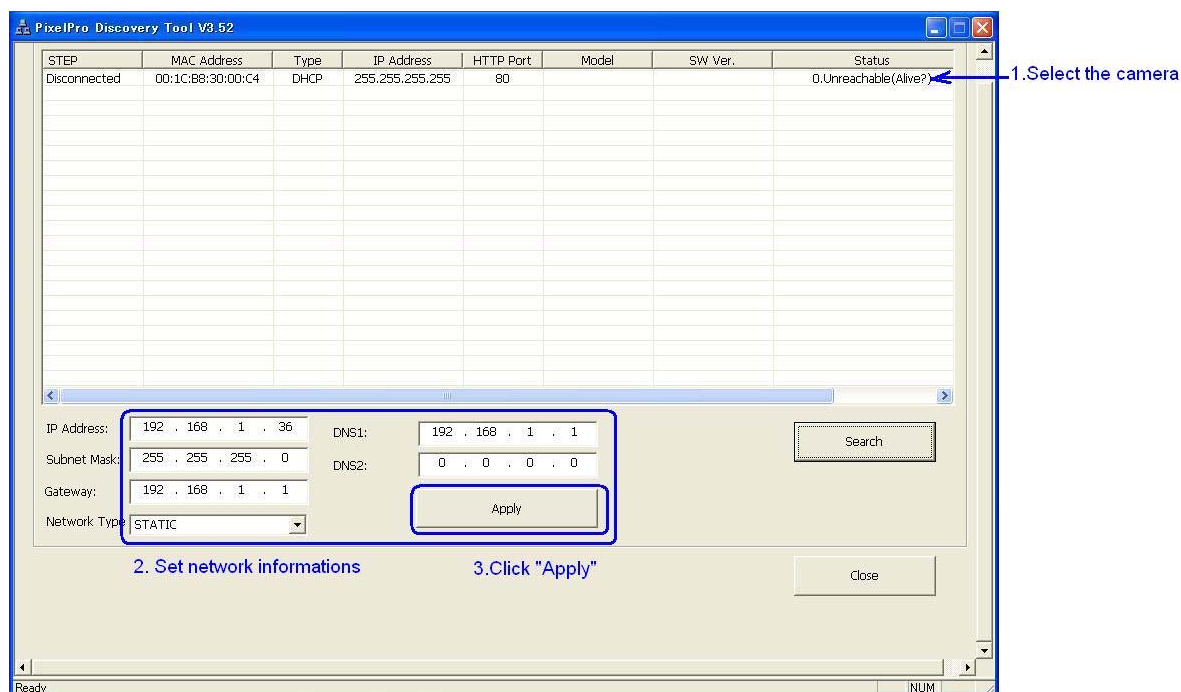
## 4. Assign IP address

The default setting of the camera is set to “DHCP” and “UPnP” function is set to ON. If you have a DHCP server on your network and UPnP function is enabled on your PC you can find the network camera in “My network”.

If a DHCP server is not available on your network, please assign IP address by the following process.

Execute PixelPro\_Discovery\_Tool.exe. It will search cameras on the network automatically.

- 1) After the camera is listed in camera list, select the camera.
- 2) Type in the all network information.
- 3) Click “Apply” button



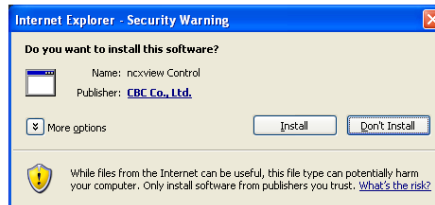
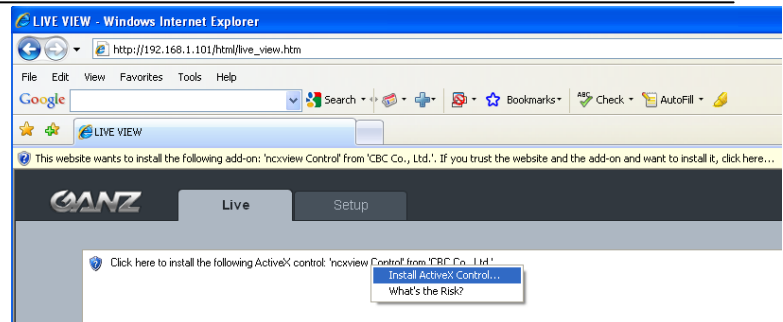
Then double click the camera in the list, Internet explorer will open automatically.

## 5. Web browser connection

**Note :** The Network camera supports Internet Explorer 7 or above.  
Please check version of your browser and update it if necessary.

When you first access the camera you need to download and install an Active X control from the camera to display a Live View image.

Default User and Password are set to “ADMIN” and “1234”. Please type in the user ID and password to connect the network camera.



**Note:** By Default the cameras come with "Installation Mode" set to "ON" to enable Analog output. You must turn installation mode off to use 720p or 1080p streaming.

**For further information for setup, please refer to User's manual in software CD.**